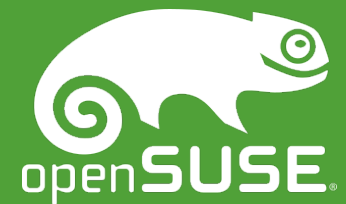


# openSUSE Leap 42.1

mit openSUSE einen Sprung nach vorne

Sarah Julia Kriesch

AdaLovelace@opensuse.org



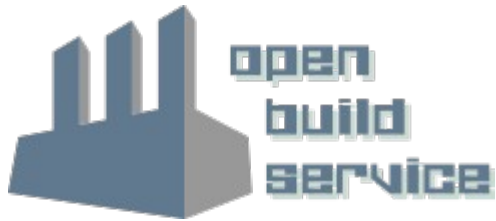
# Agenda

- Über mich
- openSUSE mit Sub-Projekten
- Software Development Lifecycle
- Neues Entwicklungsmodell
- Zahl 42
- Leap und Tumbleweed
- Neues bei openSUSE Leap
- Upgrade
- Möglichkeiten Contributor zu werden



# Über mich

- Sarah Julia Kriesch
- 28 Jahre alt
- 2009 – 2012 Ausbildung Fachinformatikerin – Systemintegration
- 2012 – 2014 Junior Linux-Systemadministrator, 1&1
- seit Okt 2014 Monat System Engineer & Linux-Systemadministrator BrandMaker
- Seit März 2015 ITO-Coordinator
- bei openSUSE: Foren, Wiki, Übersetzung, Marketing



SUSE  
studio™



Education  
openSUSE

openSUSE™ miniSUSE™

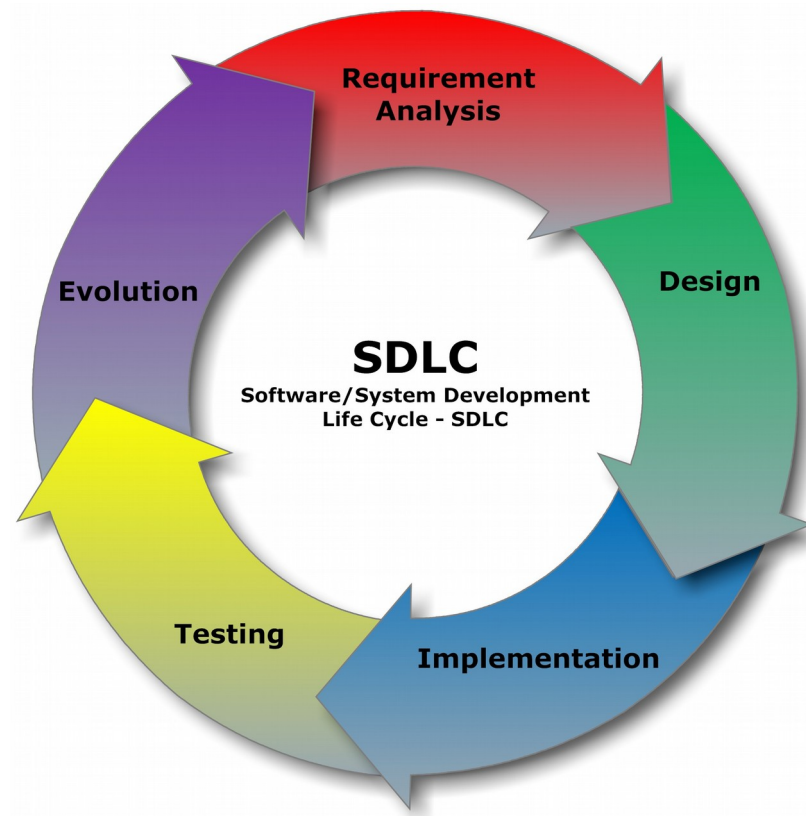


Leap

tumbleweed



# Software Development Lifecycle



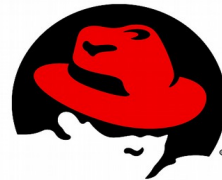
# Vergleich Kooperation SUSE mit RedHat



Leap



tumbleweed



redhat.



CentOS

# Die Zahl 42

Douglas Adams

Per Anhalter durch  
die Galaxis

Antwort auf alle Fragen

“Frage nach dem  
Leben, dem  
Universum und dem  
ganzen Rest”



SuSE Linux 4.2

openSUSE Leap 42.1

# Leap

- jährliches Release
- parallel zu SLE SPs
- enthält Pakete von SLE
- Zielgruppe:  
Endanwender und  
Systemadministratoren



Leap



# Lifetime

- 2 Releases + 2 Monate
- jedes Jahr (November) ein Release
- Leap (2,5 Jahre)
- 13.2 bis Anfang 2017
- 13.1 mit Evergreen (Langzeit-Support)



# Tumbleweed

- Rolling Release
- über das Jahr verteilt Aktualisierungen
- Test durch openQA
- für Entwickler geeignet



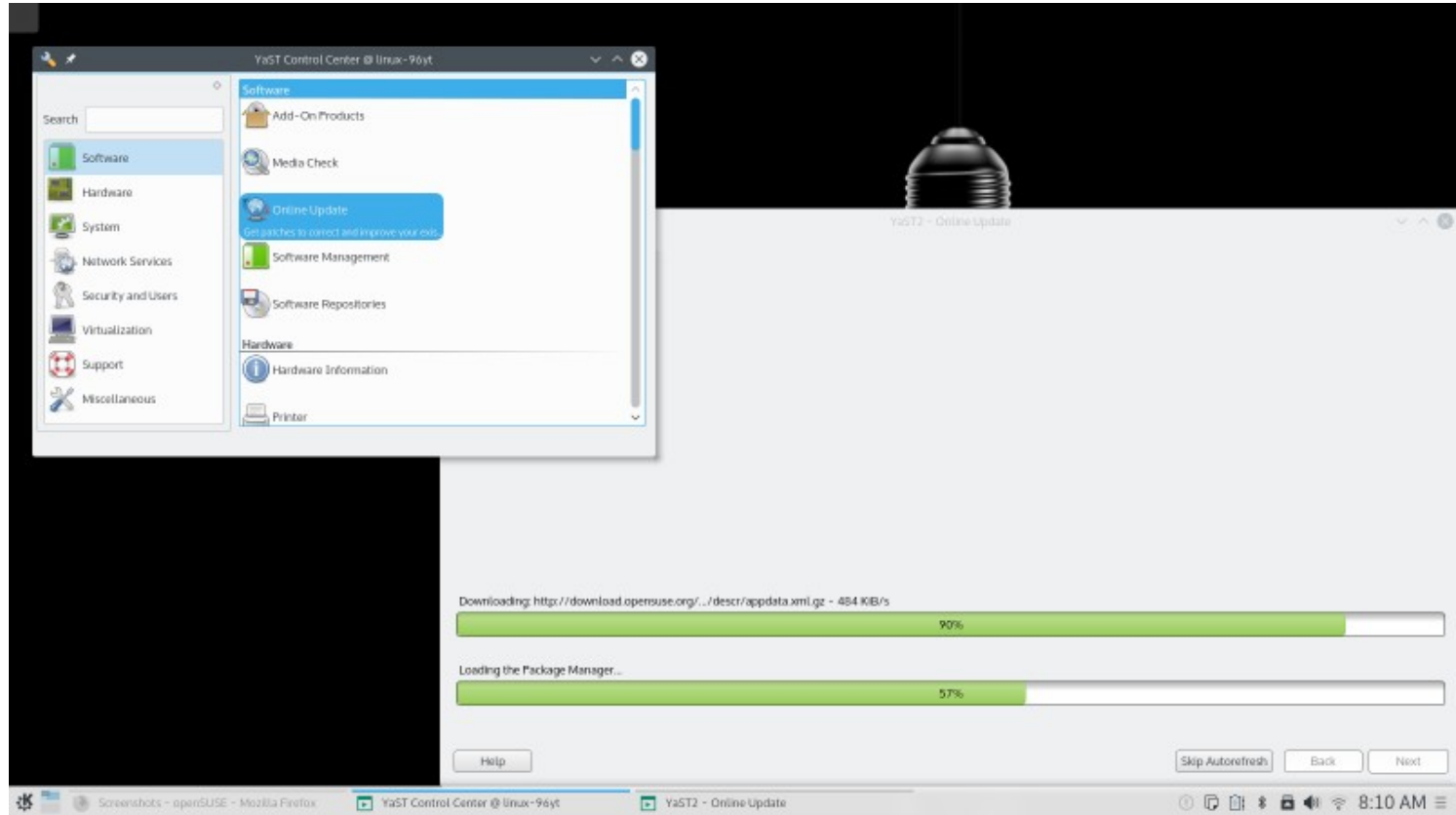
# openSUSE Leap 42.1

- Kernel 4.1 (LTS)
- stündliche Snapper-Snapshots
- LibreOffice 5
- Pakete aus Community und SLE
- Desktops: GNOME, KDE Plasma, Enlightenment, LXDE, XFCE, MATE

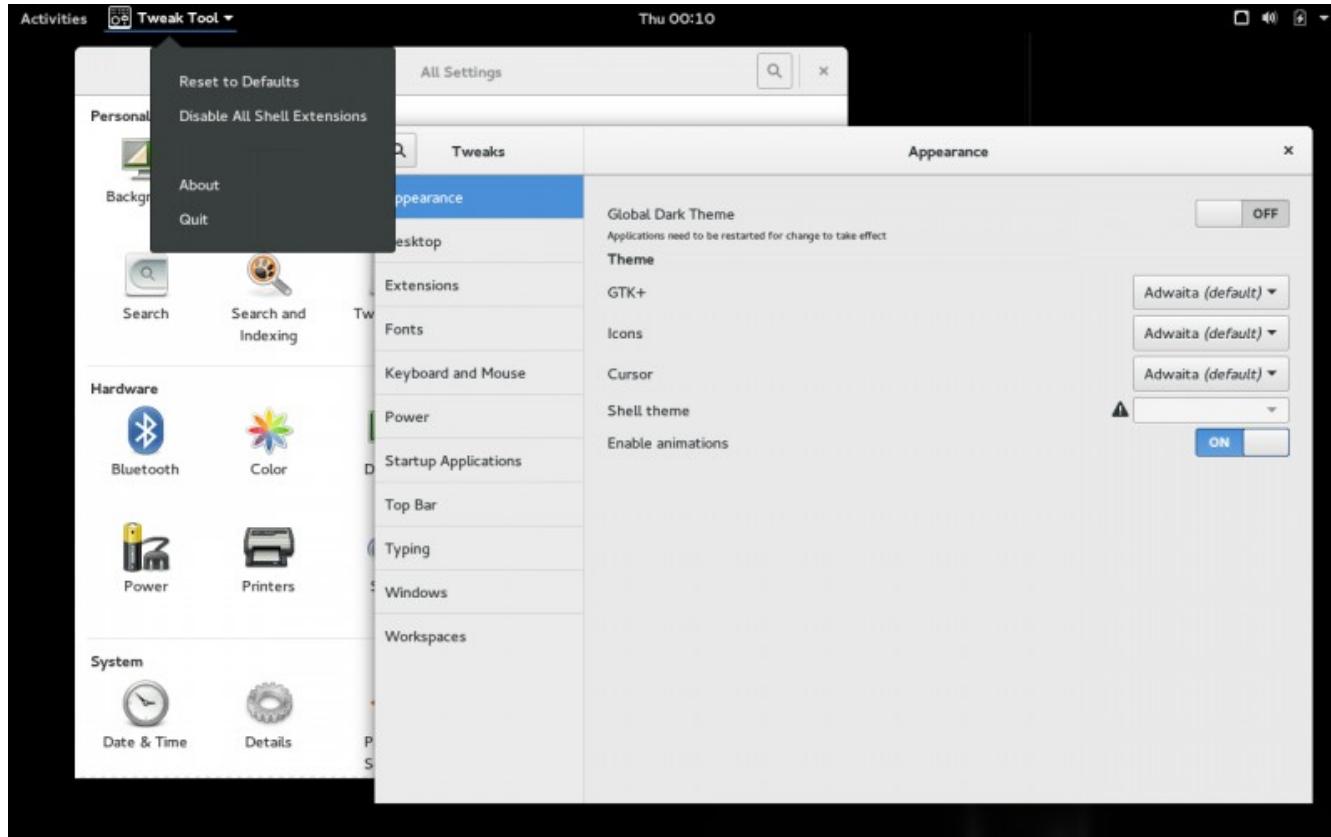


Leap

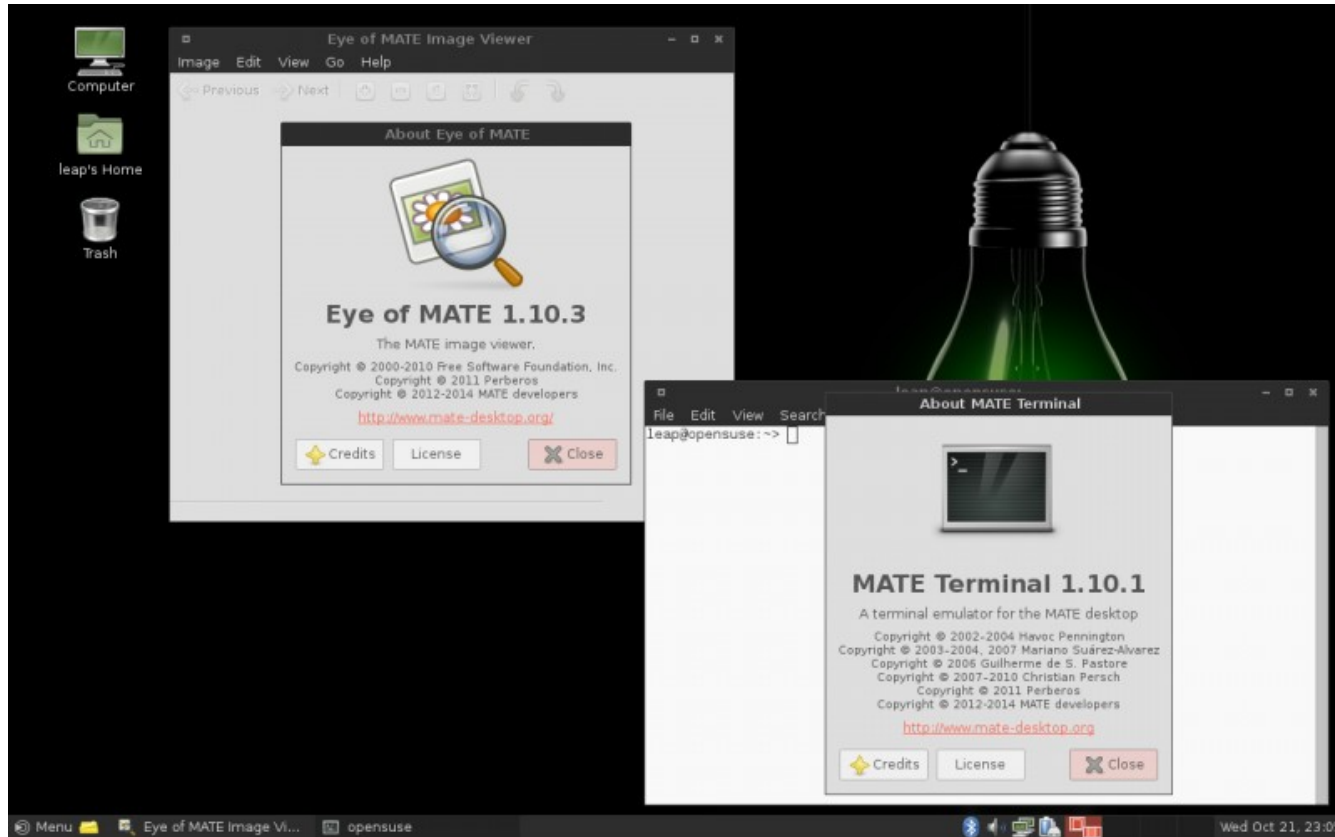
# KDE Plasma 5.4



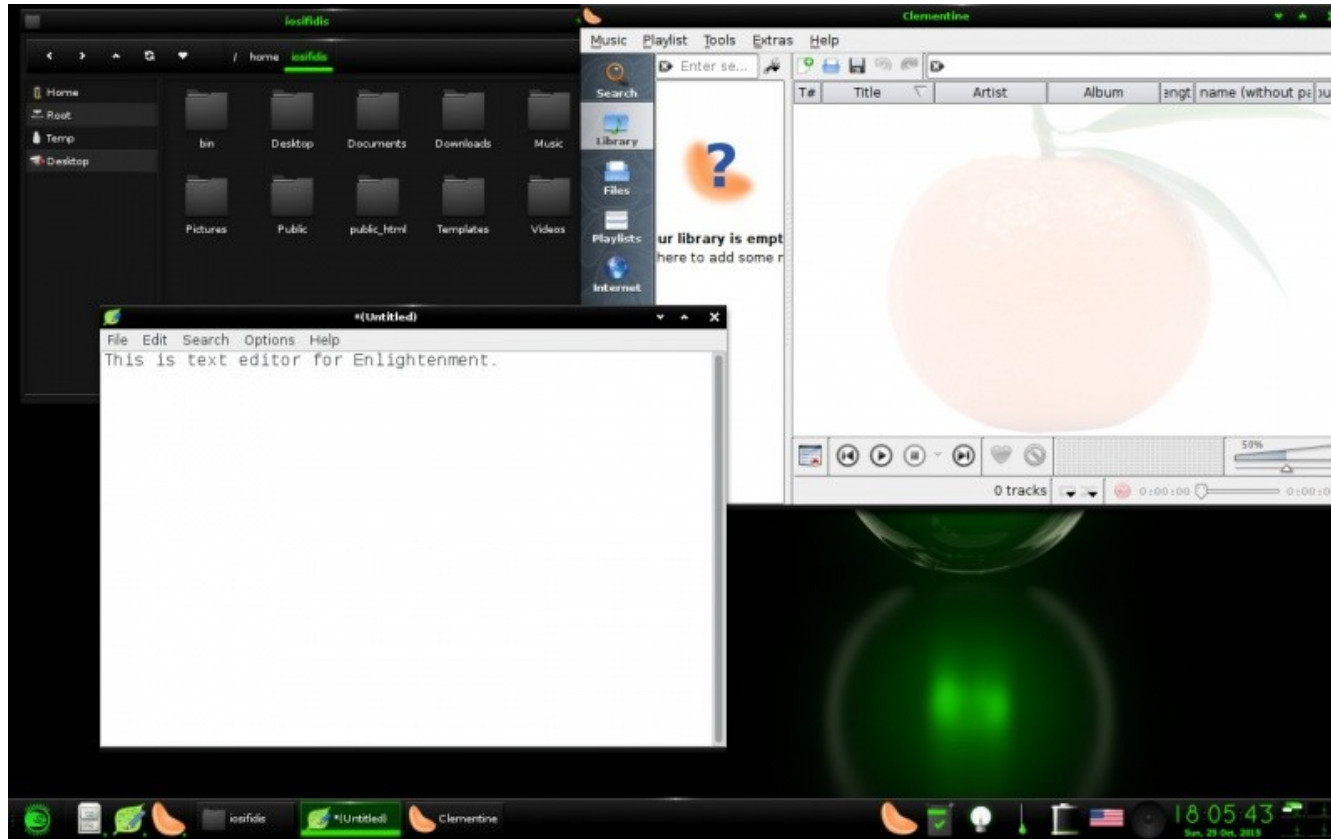
# GNOME 3.16.2



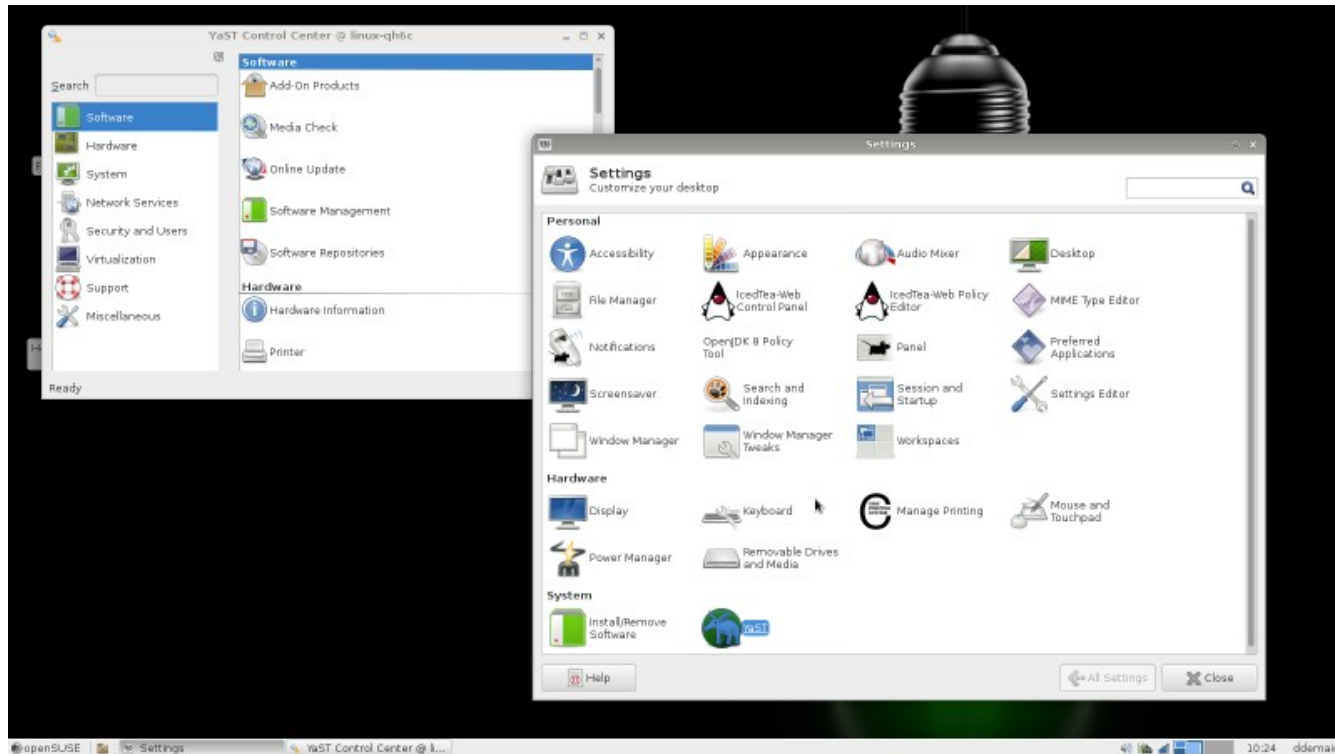
# MATE 1.10



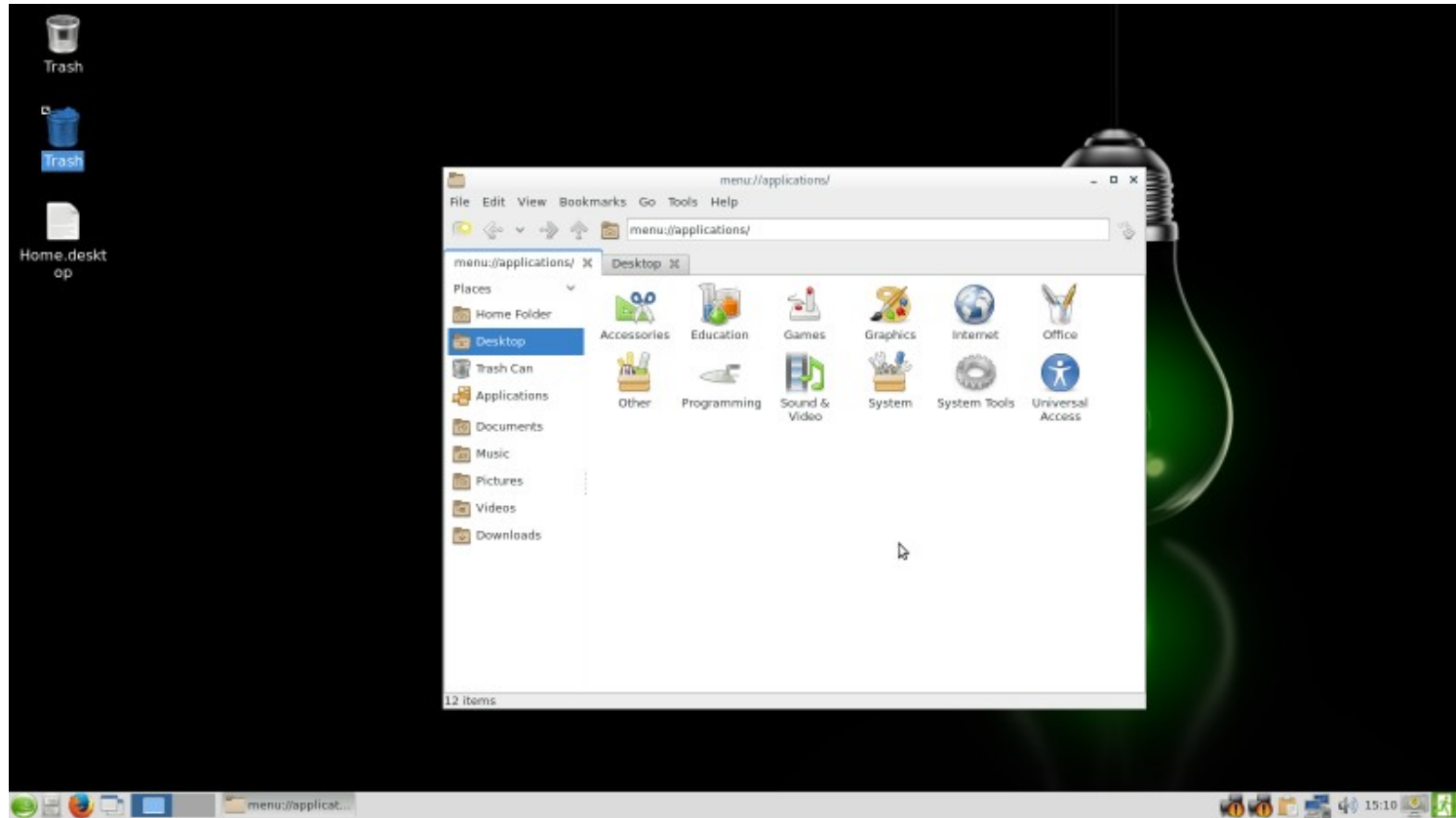
# Enlightenment 0.19.12



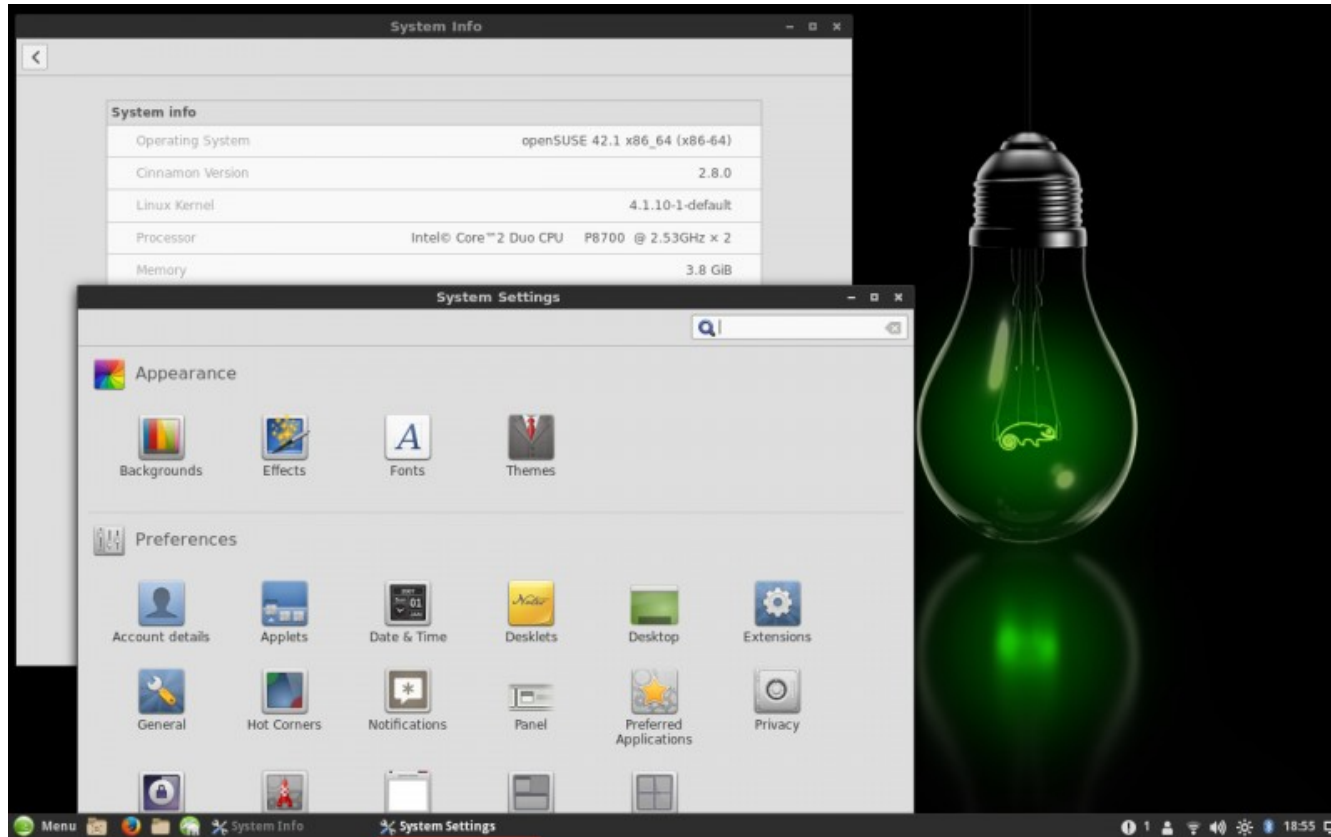
# Xfce 4.12.1



# LXDE



# Cinnamon



# Upgrade

- *zypper modifyrepo --enable repo-update*
- *zypper addrepo --check --refresh --name 'openSUSE-42.1-Update'*  
*http://download.opensuse.org/update/13.2/ repo-update*
- *zypper update*
- *cp -Rv /etc/zypp/repos.d /etc/zypp/repos.d.Old*
- *sed -i 's/13\.2/leap\42\.1/g' /etc/zypp/repos.d/\**
- *zypper ref*
- *zypper dup*

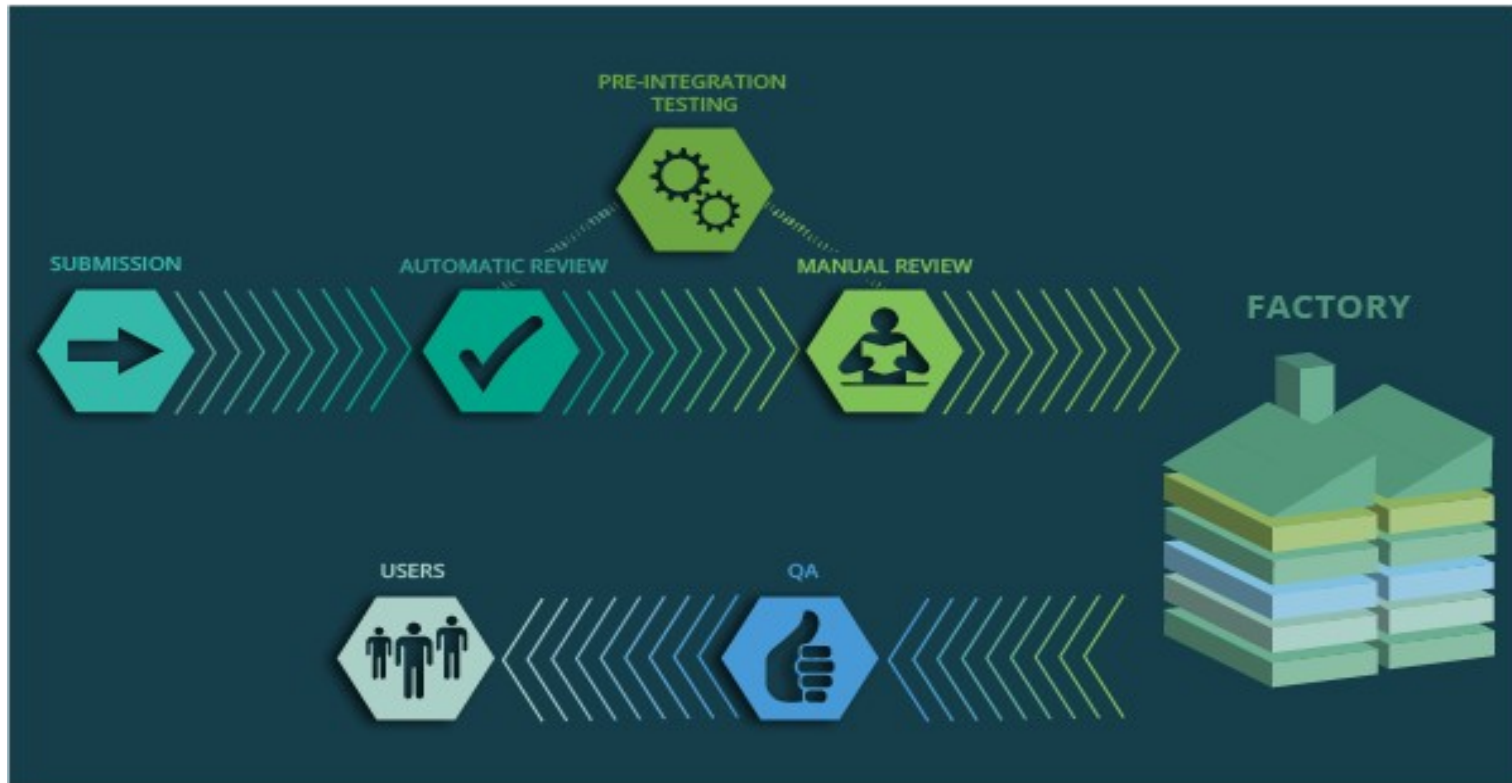
[en.opensuse.org/Upgrade](http://en.opensuse.org/Upgrade)



Lust Contributor zu werden?

# Entwicklung

- über openSUSE Factory
- [opensuse-factory@opensuse.org](mailto:opensuse-factory@opensuse.org)



# Testen

- automatisches Testen mit openQA
- Bugzilla: [bugzilla.opensuse.org](https://bugzilla.opensuse.org)
- [opensuse-testing@opensuse.org](mailto:opensuse-testing@opensuse.org)



# Wiki

- Übersetzung von Portalen ins Deutsche
- [de.opensuse.org](http://de.opensuse.org)
- [opensuse-wiki-de@opensuse.org](mailto:opensuse-wiki-de@opensuse.org)



- Erstellung von Anleitungen
- [Wiki.opensuse.org](http://Wiki.opensuse.org)
- [opensuse-wiki@opensuse.org](mailto:opensuse-wiki@opensuse.org)

# Infrastruktur

- Administration der Server
- Hosting bei SUSE
- [admin@opensuse.org](mailto:admin@opensuse.org)



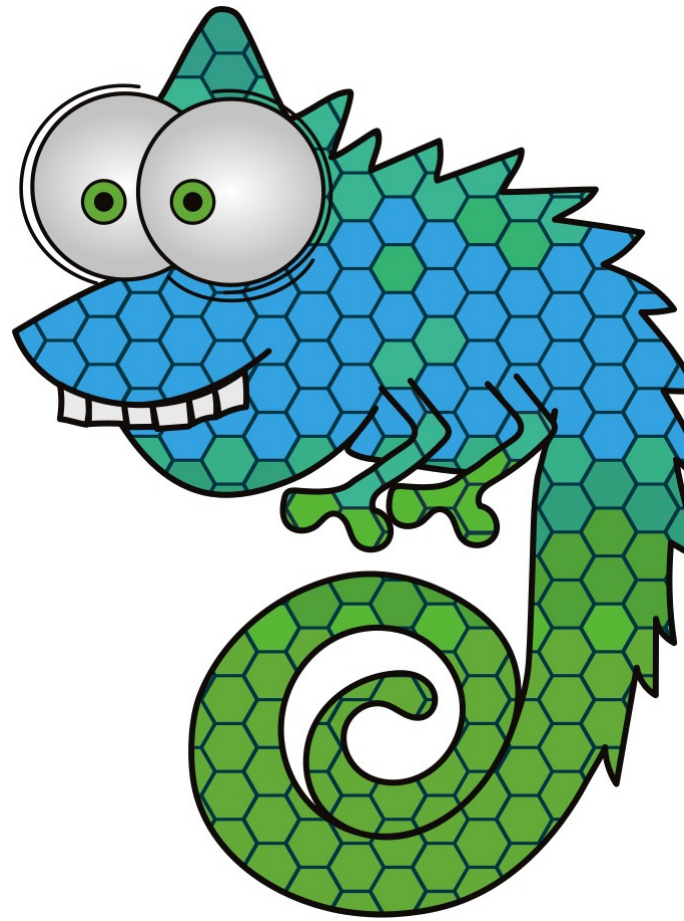


Questions?

Join the conversation,  
contribute & have a lot of fun!  
[www.opensuse.org](http://www.opensuse.org)

**Thank you.**





**Have a Lot of Fun, and Join Us At:**

[www.opensuse.org](http://www.opensuse.org)



## License

This slide deck is licensed under the Creative Commons Attribution-ShareAlike 4.0 International license. It can be shared and adapted for any purpose (even commercially) as long as Attribution is given and any derivative work is distributed under the same license.

Details can be found at <https://creativecommons.org/licenses/by-sa/4.0/>

## General Disclaimer

This document is not to be construed as a promise by any participating organisation to develop, deliver, or market a product. It is not a commitment to deliver any material, code, or functionality, and should not be relied upon in making purchasing decisions. openSUSE makes no representations or warranties with respect to the contents of this document, and specifically disclaims any express or implied warranties of merchantability or fitness for any particular purpose. The development, release, and timing of features or functionality described for openSUSE products remains at the sole discretion of openSUSE. Further, openSUSE reserves the right to revise this document and to make changes to its content, at any time, without obligation to notify any person or entity of such revisions or changes. All openSUSE marks referenced in this presentation are trademarks or registered trademarks of SUSE LLC, in the United States and other countries. All third-party trademarks are the property of their respective owners.

## Credits

### Template

Richard Brown

[rbrown@opensuse.org](mailto:rbrown@opensuse.org)

### Design & Inspiration

openSUSE Design Team

<http://opensuse.github.io/branding-guidelines/>